

# The New York State Rehabilitation Research & Training Institute (NYS RRTI) Presents:

**UNDERSTANDING PEOPLE WITH DEVELOPMENTAL DISABILITIES**

**DSRIP Workforce Training Opportunity**

**Presented by:**

**Michael Seereiter, President & CEO**  
New York State Rehabilitation Association

**Jill Dorsi, LCSW-R**

**Vicki Schultz, MS, RN, ANP**



**Utilization and Cost of Providing Health Care for People with ID/DD is**

**DOUBLE**

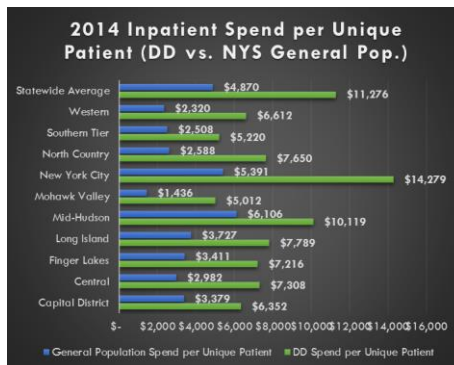
**that of the general population!!**

- Use ER services more frequently
- Re-hospitalization following hospital discharge



The Rehabilitation Research & Training Institute (RRTI) Presents:

**UNDERSTANDING PEOPLE WITH DEVELOPMENTAL DISABILITIES** DSRIP Workforce Training Opportunity



Source: Douglas Fish, MD, Delivery System Reform Incentive Payment (DSRIP) Program and Potential Impacts for the Developmentally Disabled Populations: Collaborative, Integrated, and Quality-driven Care PPT, NYSBA-NYSACRA Community Integration Leadership Institute, June 2015  
(Click image to view full powerpoint presentation)



## Unique Individuals... Unique Challenges

- Health issues often fall outside the experience-base of community-based health care professionals
- Individuals with ID/DD may present at a hospital or ER without someone who knows them well enough to provide comprehensive health information
- Each person's capacity for cognition and communication is unique and may impact the person's ability to provide personal health history or describe current symptoms accurately and reliably
- Decision Making authority for people with ID/DD is governed by many rules and regulations – a person may or may not have decision-making authority around health care procedures
- Residential options vary enormously – planning a safe discharge requires an understanding of the supports available in the person's residential situation & how to arrange an alternate option if necessary

The Rehabilitation Research & Training Institute (RRTI) Presents:

UNDERSTANDING PEOPLE WITH DEVELOPMENTAL DISABILITIES DSRIP Workforce Training Opportunity

## RRTI's Curriculum Offers Tools to Help You Provide Cost-Effective Quality Services

- **Comprehensive, Accurate Health Assessments:**
  - developing a protocol
- **Understanding** unique health care risks of people with ID/DD
- **Cognition and Communication Challenges:**
  - how to assess
  - what to expect
- **Identification of Decision Making Authority:**
  - understanding various forms of consent and how to obtain consent
- **Assuring Safe, Effective Discharge Planning:**
  - understanding residential options and available supports;
  - developing alternative settings



The Rehabilitation Research & Training Institute (RRTI) Presents:

UNDERSTANDING PEOPLE WITH DEVELOPMENTAL DISABILITIES DSRIP Workforce Training Opportunity

## RRTI's Curriculum is **UNIQUE**

- Developed & taught by licensed professionals, each with over 30 years experience in the field
- Integrates individualized, person-centered treatment planning & service delivery
- Informed by CMS and NYS regulatory requirements, including HCBS waiver protocol



The next few slides represent established curriculum topics with room for customization!

- Modules include wide range of topics, including special health concerns of people with Down Syndrome, seizure disorders, dual diagnosis (ID/DD and behavioral health) and the unique challenges for aging individuals with ID/DD
- Curricula can be designed to meet your specific needs

The Rehabilitation Research & Training Institute (RRTI) Presents:

**UNDERSTANDING PEOPLE WITH DEVELOPMENTAL DISABILITIES** DSRIP Workforce Training Opportunity

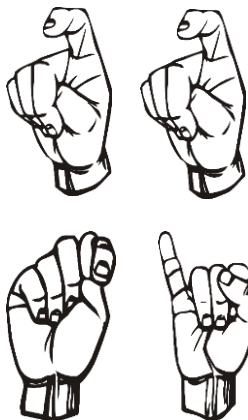
## Understanding Unique Health Issues for People with ID/DD



The Rehabilitation Research & Training Institute (RRTI) Presents:

**UNDERSTANDING PEOPLE WITH DEVELOPMENTAL DISABILITIES** DSRIP Workforce Training Opportunity

## Communication and Cognition Challenges



- Expressive vs. Receptive Skills
- Illness Comprehension and Ability to Report Symptoms
- Self-Advocacy
- Individuals with ID/DD and who are deaf or hard of hearing

The Rehabilitation Research & Training Institute (RRTI) Presents:

UNDERSTANDING PEOPLE WITH DEVELOPMENTAL DISABILITIES DSRIP Workforce Training Opportunity

## Unique Healthcare Needs of Individuals With ID/DD

- Multiple Co-Morbidities & Co-Occurring Medical Issues
- Atypical Presentation of Physical Illness or Symptoms
- Recognizing Psychiatric Symptoms in Individual's with ID/DD
- Individuals live in a variety of settings with different levels of supports and services to be considered when planning healthcare



The Rehabilitation Research & Training Institute (RRTI) Presents:

UNDERSTANDING PEOPLE WITH DEVELOPMENTAL DISABILITIES DSRIP Workforce Training Opportunity

## The Fatal Five: What You Need to Know

Working towards preventing preventable deaths in individuals with ID/DD living in community and/or congregate settings...

1. Bowel obstruction
2. GERD
3. Aspiration
4. Dehydration
5. Seizures



The Rehabilitation Research & Training Institute (RRTI) Presents:

UNDERSTANDING PEOPLE WITH DEVELOPMENTAL DISABILITIES DSRIP Workforce Training Opportunity

## Understanding Regulations Governing Health Care for People with ID/DD

Compliance, Oversight, and  
Person-Centered Focus



The Rehabilitation Research & Training Institute (RRTI) Presents:

UNDERSTANDING PEOPLE WITH DEVELOPMENTAL DISABILITIES DSRIP Workforce Training Opportunity

## Understanding Regulations: How Do These Govern Healthcare for People with ID/DD?

- Multiple agencies may be involved:
  - CMS (Medicaid/Medicare/HCBS)
  - NYS Department of Health (DOH)
  - NYS Office of People with Developmental Disabilities (OPWDD)
  - NYS Education Department (NYSED)
  - NYS Office of Mental Health (OMH)
  - NYS Office of Alcohol & Substance Abuse (OASAS)
  - NYS Justice Center for the Protection of People with Special Needs



The Rehabilitation Research & Training Institute (RRTI) Presents:

UNDERSTANDING PEOPLE WITH DEVELOPMENTAL DISABILITIES DSRIP Workforce Training Opportunity

## Navigating the Regulatory Terrain



- Civil Rights of Individuals with ID/DD
- Healthcare Planning for People with Forensic Involvement
- Medicaid Compliance Statutes

The Rehabilitation Research & Training Institute (RRTI) Presents:

UNDERSTANDING PEOPLE WITH DEVELOPMENTAL DISABILITIES DSRIP Workforce Training Opportunity

## Obtaining Consent for Medical Treatment

- Capacity vs. Competency
  - Not everyone is able to give consent for all treatment!
- Supported Decision Making
- Who Can Give Consent?
- Health Care Proxies/Living Wills/Advanced Directives
- Surrogate Decision Making Committee



The Rehabilitation Research & Training Institute (RRTI) Presents:

UNDERSTANDING PEOPLE WITH DEVELOPMENTAL DISABILITIES DSRIP Workforce Training Opportunity

## Effective Discharge Planning

Residential Supports,  
Community Access,  
Staff Training



The Rehabilitation Research & Training Institute (RRTI) Presents:

UNDERSTANDING PEOPLE WITH DEVELOPMENTAL DISABILITIES DSRIP Workforce Training Opportunity



## Understanding Residential Supports

- Residential Certification and the Level of Supports and Supervision
- Staff Expertise and Access to Professional Nursing Care
- Follow-Up Care Planning
  - Role of the Nurse Practice Act in Discharge Planning



The Rehabilitation Research & Training Institute (RRTI) Presents:

UNDERSTANDING PEOPLE WITH DEVELOPMENTAL DISABILITIES DSRIP Workforce Training Opportunity

## Supporting DSPs/UAP Providing Healthcare



- Generalized training in healthcare needs of individuals with ID/DD
- Task-specific training and certification
- Behavior Support Plans for Person-centered care
- Registered Professional Nurse Oversight
  - Telephone Triage
  - Plans of Nursing Service for Person-centered care

The Rehabilitation Research & Training Institute (RRTI) Presents:

UNDERSTANDING PEOPLE WITH DEVELOPMENTAL DISABILITIES DSRIP Workforce Training Opportunity



## RRTI's Curriculum Provides the Information You Need

Call RRTI to schedule a planning meeting to discuss your individual agency's and/or network's needs.

REHABILITATION  
RESEARCH AND  
TRAINING INSTITUTE

**RRTI**



**Contact:**

Jill Dorsi, LCSW-R

[jill@nyrehab.org](mailto:jill@nyrehab.org)

518-449-8105